



abemi

Brazilian Association of Industrial Engineering

INSTITUTIONAL PRESENTATION



Who we are

THE ENTITY

Brazilian Association of Industrial Engineering (ABEMI)
Non-profit organization.

MAIN OBJECTIVE

To represent the Brazilian Industrial Engineering Sector encompassing Project Design, Civil Construction, Electromechanical Erection, EPC, Maintenance, Fabrication and Logistics activities.

To comply and exceed market demands, ABEMI has its main drives focused on ESG (Environmental, Social and Governance), Innovation, Technology, and Compliance as well as Institutional Representation.



FOUNDED

May 1964.



ORIGIN

Association of Electromechanical
Erection Contractors.



OBJECTIVE

To encourage and develop the activities
and performance of national industrial
and engineering contractors.



RESULTS

Participation of Brazilian
companies in all phases of
project development.



Mission

GATHER AND REPRESENT THE ASSOCIATES

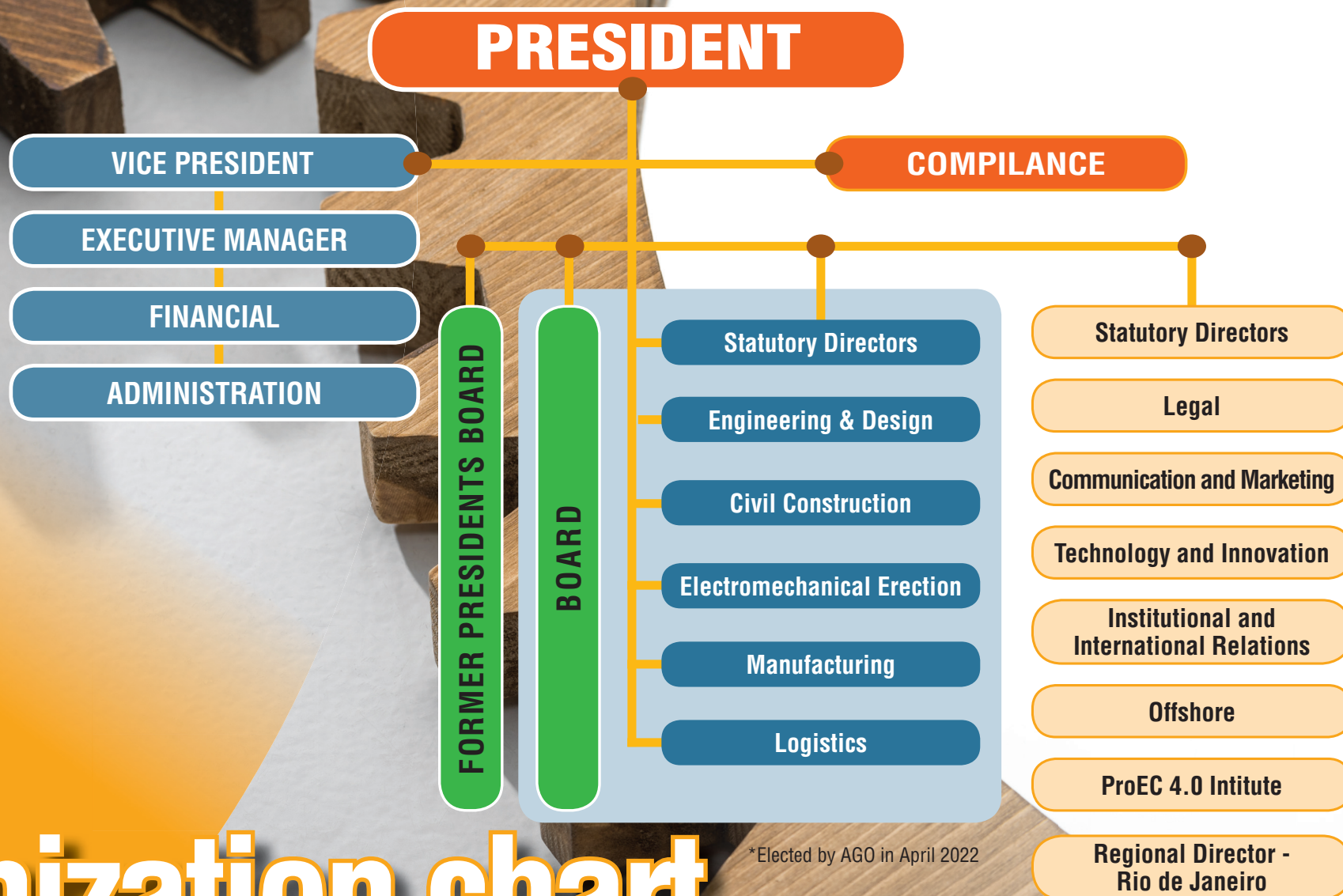
Exercise the defense of collective interests:

- In the relationship with public and private customers
- In the institutional representation in front of public entities
- In the search to amplify knowledge and competitiveness of our sector.

**To contribute for the
ECONOMIC AND SOCIAL DEVELOPMENT OF THE NATION.**

Vision

**To be recognized
as a prestigious
institution and
representativeness
in defense of the
interests of our
associates and the
national industrial
engineering sector.**



*Elected by AGO in April 2022

Organization chart



Brazilian Association of Industrial Engineering

Organization chart

ABEMI COMMITTEES

Strategic Alliances

Waste to Energy

Communication and Marketing

Energia

ESG

Legal

Sanitation and Environment

Safety and Productivity

ABEMI Partnerships

CAMARB

Lean Institute Brazil

ProEC 4.0 Institute

CII (Construction Industry
Institute)

TRACE International

DIRECTORS

Statutory Members Elected for 2022/2025 term

President

Joaquim Maia
Toyo Setal

Vice President

Maria Michielin
Toledo Marchetti Oliveira Vaturi e Medina Sociedade de Advogados

ENGINEERING & DESIGN

Thomaz Miglio
AP Consultoria e Projetos

FABRICATION

Paolo Fiorletta
Metroval Controle de Fluídos

ELECTROMECHANICAL ERECTION

Oscar Simonsen
Montcalm Montagens Industriais

LOGISTICS

Michel Rossi
Engetec Construções e Montagens

EXECUTIVE MANAGER

Augusto Andrade

BOARD

Conselour Board members elected for the 2022/2025 term

ENGINEERING & DESIGN

Márcio Cancellara
Projectus Consultoria
Deputy: Cedric Romano – *DBR Energies*

CIVIL CONSTRUCTION

Tarcísio Ribeiro de Albuquerque Filho
Azevedo e Travassos Infraestrutura
Deputy: Miller Rufino
Empresa Construtora Brasil

FABRICATION

Davi Azevedo
Kempetro Engenharia
Deputy: Luiz Cholfe
Statura Engenharia e Projetos

ELETROMECHANICAL ERECTION

Rafael Lima
Toyo Setal
Deputy: Fernando Quintas
KPE Performance em Engenharia

LOGISTICS

Henrique Zuppardo
Megatranz Transportes
Deputy: Maurício Terenzio
Enterprise Transportes Internacionais

APPOINTED DIRECTORS

LEGAL

Marcelo Marchetti
Toledo Marchetti Oliveira Vaturi e Medina Sociedade de Advogados

MARKETING AND COMMUNICATION

Hideo Hama
Fluxo Soluções Integradas

INTERNATIONAL AND INTITUTIONAL RELATIONS

Jaime Llopis
COBRA Brasil Serviços de Comunicações e Energia

INNOVATION AND TECHNOLOGY

Newton Freire
Innova Tecnologia

OFFSHORE

Luiz Felipe Camargo
Estaleiro EBR

PRO EC 4.0 INSTITUTE

Mauricio Godoy
Construction Management

CIVIL CONSTRUCTION

Marcelo Neves
Tenenge

REGIONAL (RIO DE JANEIRO)

Marcelo Bonilha
EBSE

Directors

Coordination between associates, customers and stakeholders, **searching for improvements** in the following areas:

- Management of control and execution systems.
- Construct methods and processes.
- Technical and Management Staff.



**Engineering
& Design**



**Civil
Construction**



**Electromechanical
Erection**



Fabrication



Logistics

WE ARE COMPETITIVE

Partnerships Agreements



Trace International –
Washington DC
As part of **ABEMI's**
commitment to the
fulfillment of international
standards of compliance,
integrity and antibribery,
the agreement
entered into with Trace
International in 2019 has
been renewed since then.



CAMARB (Corporate
Arbitration and
Mediation Chamber) -
Partnership aiming to
promote solutions for its
associates in extrajudicial
resolutions of trade
conflicts in engineering
and construction sector.



Lean Institute –
The Lean Institute Brasil
(LIB) methodology
uses tools and
concepts adapted
to the sector, which
significantly increase the
productivity, efficiency
and quality, besides
triggering innovation
initiatives, such as BIM,
digitalization, and
process innovation.



CII (Construction
Industry Institute)
Austin University Texas
– World Reference
on best practices
in the Construction
industry projects, aim
to shift **ABEMI** as
the protagonist in the
industrial engineering
and construction
industry development
in Brazil.



PARQUE TECNOLÓGICO DE SOROCABA

ProEC 4.0 Institute
(Engineering and
Construction Institute 4.0)
To promote the development
of 4.0 tools for the Industrial
Engineering and Heavy
Construction sector through
innovation and digital
transformation. Creation
of **NECSOR** (Engineering
and Construction Nucleus
of Sorocaba) at the PTS
(Technological Park
of Sorocaba).

Committees

Strategic Alliances

To encourage the dialogue and alignment of mutual interests with class entities and associations of the engineering and infrastructure sector.

Waste to Energy

To promote new technologies in the Waste to Energy Area.

Communication and Marketing

To expand our association activities to enable opportunities in order that **associates** can promote their actions and projects.

Energy

To monitor the developments of the electrical sector in power generation (renewable and traditional sources), generation, transmission and distribution. Participate in the development of the energy transition markets. Permanent participation at the Electric Sector Associations Forum (**FASE**).

ESG (Environmental, Social & Governance)

Foster the adoption of good **ESG** practices by the Industrial Engineering sector, through the consistent study of the main risks and opportunities that involve each of the variables, the approach of technical and practical aspects, the construction of a materiality matrix and the analysis of goals and metrics available on the market.

Legal

The follow up of law changes affecting the interests of associates members issuing legal opinions about the most relevant themes in the sector. Legal support to **ABEMI's** institutional manifestations in order to promote and protect the industrial and infrastructure markets.

Sanitation and Environment

To promote the diffusion of new technologies and engineering practices applied to the Sanitation sector. Interact with public and private **stakeholders**.

Sub-groups

- Engineering, Planning and New Technologies
- Project Investments and Structuring
- Sanitation Legal Framework Markets Monitor

SMS SAFETY and Productivity

To analyze and promote discussions about the new Regulatory Standards (**NRs**).

To support the information exchange in meetings, workshops and seminars.



Compliance

ABEMI, guided by the principles of integrity, ethics and transparency, has a **Compliance Program**, which is aimed at establishing the main guidelines and best practices that should be present in any current or future relationship between **ABEMI** and any person or legal entity.

The **Compliance Area** is led by **Marcelo Lima, Chief Compliance Officer (CCO)** and a member of **ABEMI's** senior management, which brings independence in the accomplishment of its activities.



The **Permanent Compliance Committee** is responsible for overseeing **ABEMI's** Compliance Program, subject to the legislation and regulations applicable to **ABEMI's** Code of Conduct and to the Internal By-laws that discipline its operation.

Our **Permanent Compliance Committee** will analyze and review every report received, through the **Confidential Channel**, about possible violations of our Codes of Conduct and Ethics, as well as of our regulations and procedures.



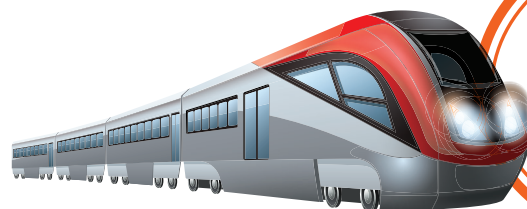
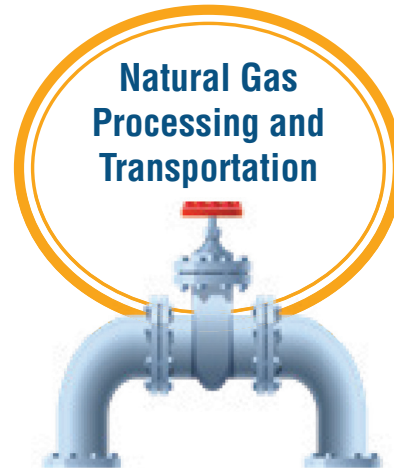
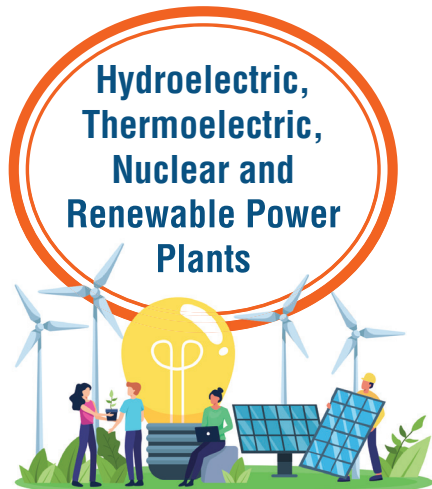
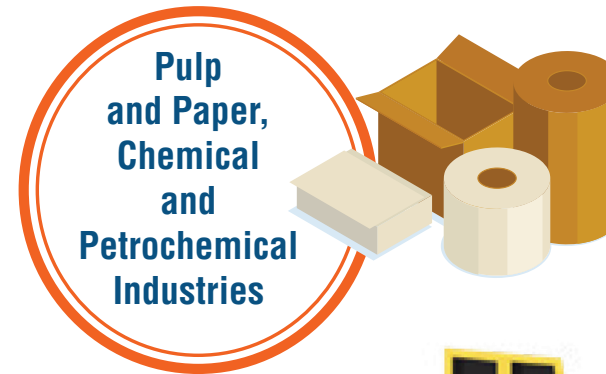
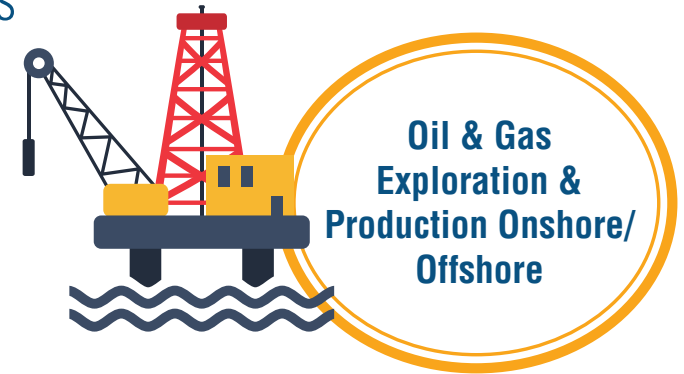
The CODE OF CONDUCT and the CODE OF ETHICS are the MAIN PILLARS of ABEMI's Governance.

The Strength of our Associates

ABEMI has been strengthened
throughout the growth and
relevance of the
Associated Companies.



Our Associated Companies are in charge of the most important jobs in the country in the following sectors: Design Engineering, Civil Construction, Industrial Assembly, Equipment Manufacturing, Maintenance and Logistics.



Achievements and Milestones

Including Human Resources Qualification Programs



National Program
of **Professional
Qualification**
More than **85 thousand**
professionals qualified
in **136 professional**
categories



Business Management
MBA. More than 300
qualified professionals.



Brazilian Oil & Gas
Industry Mobilization
Program promoted by
the Ministry of Mines
and Energy



Business
Management MBA



Inspectors Qualification
Course

abemi

Brazilian Association of Industrial Engineering



www.abemi.org.br

Headquarters: Rua Tabapuã, 81, 9th floor, Conj. 91 e 92 - Itaim BIBI, São Paulo, SP, Zip Code: 04533-901
Phone: +55 11 3251-0333 - Email: abemi@abemi.org.br

Follow us on social media:

