

# Corporate Presentation 2025





# Who We Are

## THE ORGANIZATION

The Brazilian Association of Industrial Engineering (**ABEMI**) is a non-profit civil entity.

## CORE OBJECTIVE

To represent Brazilian engineering companies involved in Design, Civil Construction, Assembly and Maintenance, Manufacturing, and Logistics. Aligned with market challenges, **ABEMI's** activities are guided by key pillars such as ESG (Environmental, Social, and Governance), Innovation, Technology, and Compliance.







# Who We Are



## FOUNDATION

May 1964



## ORIGIN

Established as an association of industrial assembly companies.



## PURPOSE

To promote and enhance the performance of Brazilian industrial engineering companies.



## IMPACT

Enabling the participation of Brazilian industrial engineering companies in all phases of project development.



# Mission

**To unite and represent member companies.**

**To advocate for collective interests by:**

- Engaging with public and private clients.
- Representing the industry before governmental and regulatory bodies.
- Promoting knowledge and best practices to enhance the sector's competitiveness.

To contribute to the  
**ECONOMIC** and **SOCIAL**  
**DEVELOPMENT** of  
the country.





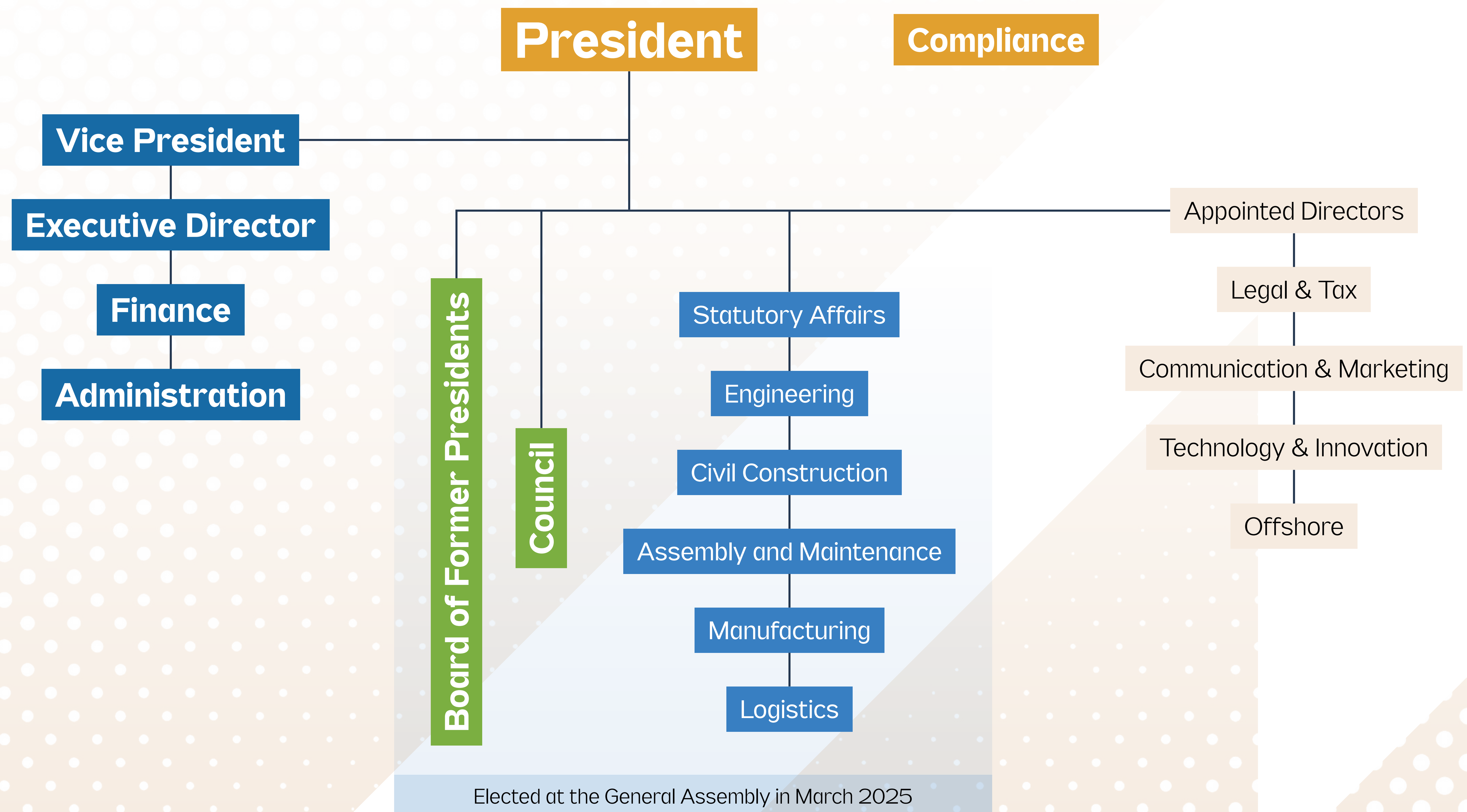
# Vision

To be recognized as a prestigious and representative institution in advocating for the interests of its members and the national industrial engineering sector.





# Organizational Chart





# Organizational Chart

## ABEMI Committees

Strategic Alliances

Energy Recovery  
from Solid Waste

Communication & Marketing

Energy

ESG

Legal & Tax

HSE and Productivity

## ABEMI Partnerships

CAMARB

Lean Institute Brasil

CII (Construction  
Industry Institute)

TRACE International





# Organizational Chart



## Board of Directors

Elected members for the 2025-2028 Term

### PRESIDENT

Nelson Romano (DBR Energies)

### VICE PRESIDENT

Marcio A. Cancellara (Projectus/PRJN Engenharia)

### DIRECTOR OF ENGINEERING

Thomaz Americano (AP Consultoria e Projetos)

### DIRECTOR OF MANUFACTURING

Paolo Fiorletta (Metroval Controle de Fluidos)

### DIRECTOR OF ASSEMBLY AND MAINTENANCE

Jaime Llopis (Cobra Brasil Serviços)

### DIRECTOR OF LOGISTICS

Henrique Zuppardo Junior (Megatranz Transportes)

### DIRECTOR OF CIVIL CONSTRUCTION

Michel Rossi (EGTC Infra)

### APPOINTED DIRECTORS

José Aparecido Mello - Executive Director

Maria Michielin - Legal & Tax Director (Toledo Marchetti Advogados)

Hideo Hama - Director of Communications and Marketing (Fluxo)

Luiz Felipe Camargo - Offshore Director (Estaleiro EBR)

Maurício Godoy - Innovation & Technology Director (EMPRESA)

Marcelo Marchetti - Compliance Director (Tolego Marchetti Advogados)

## Council Members

Elected Members for the 2025-2028 Term

### ENGINEERING

Roberto Pena (GP Consultoria e Engenharia)

Cedric Romano (DBR Energies)

### CIVIL CONSTRUCTION

André Bonugli (Engecampo)

Luiz Cholfe (Statura Engenharia e Proj.)

### MANUFACTURING

Hideo Hama (Fluxo Solutions)

Davi Barbosa Azevedo (Kempetro Engenharia)

### ASSEMBLY AND MAINTENANCE

Marcelo Neves Ferreira (Tenenge Engenharia)

Wallace Monteiro (Niplan)

### LOGISTICS

Maurício Terenzio (Enterprise Transportes Internacionais)

Newton Freire (Innovo Tecnologia)





# Boards



Coordination among members, clients, and stakeholders, **aiming to improve:**

- management of execution and control systems;
- construction processes and methods;
- technical and managerial staff.

We are  
**COMPETITIVE!**



**Engineering**



**Logistics**



**Civil  
Construction**



**Manufacturing**



**Assembly  
and Maintenance**



# Partnerships & Agreements



## Trace International

**Trace International:** As part of **ABEMI's** commitment to upholding international standards of compliance and integrity, the agreement established with Trace International in 2019 has been successfully renewed on an annual basis.



## CAMARB

**Chamber of Mediation and Business Arbitration – Brazil:** A strategic partnership aimed at offering members effective alternatives for the out-of-court resolution of commercial disputes, particularly within the engineering and construction sectors.



## Lean Institute

Metodologia do **Lean Institute Brasil (LIB):** Implementation of tailored tools and concepts from LIB designed specifically for the sector, significantly enhancing productivity, efficiency, and quality, while also supporting innovation initiatives such as BIM, digitalization, and industrialization.



## CII

**Construction Industry Institute:** A global benchmark in innovation and best practices for capital project industries, this collaboration positions ABEMI as a key player in driving performance transformation across Brazil's engineering and construction sectors.



## ProEC 4.0

**ProEC 4.0 (Instituto Brasileiro de Engenharia e Construção 4.0):** A program dedicated to fostering the sustainable growth of the industrial engineering and heavy construction sectors through innovation and digital transformation. This includes the establishment of NECSOR (Engineering and Construction Hub of Sorocaba) at the Sorocaba Technology Park (PTS).



# Work Committees

## 1. Energy Recovery from Solid and Urban Waste

Plan, organize, coordinate, and implement strategies aimed at the energy transition.

## 2. Communication & Marketing

Expand the dissemination of the Association's initiatives and provide **AFFILIATES** with opportunities to promote their actions and projects.

## 3. Legal & Tax

Monitor legislative changes relevant to member companies and issue legal and tax opinions on key industry matters. Support **ABEMI's** institutional actions focused on market development and protection.





# Work Committees

## 4. ESG (Environmental, Social and Governance)

Encourage the adoption of **ESG** best practices in the Industrial Engineering sector through in-depth analysis of key risks and opportunities related to each dimension, technical and practical discussions, development of a materiality matrix, and assessment of available market goals and metrics.

## 6. HSE and Productivity

Discuss and analyze the new **Regulatory Standards** (NRs).

Support knowledge sharing through meetings, workshops, and seminars.

## 7. Energy Transition

Assess technologies and develop programs to foster the participation of **ABEMI** member companies in the energy transition and environmental decarbonization process.





# Compliance

Guided by the principles of integrity, ethics, and transparency, **ABEMI** has established a **Compliance Program** aimed at defining key guidelines and best practices to govern its relationships with all individuals and Legal & Tax entities it engages with, now or in the future.

This program ensures that all actions taken by the organization are aligned with ethical and Legal & Tax standards, fostering a corporate culture grounded in compliance and accountability.

The **Compliance** area is led by Marcelo Marchetti, Chief Compliance Officer (CCO), and is part of **ABEMI's** Executive Management, ensuring the independence necessary for the effective execution of its activities.







# The Strength of the Companies

**ABEMI** has grown stronger alongside the increasing scale and relevance of its Member Companies. These companies are responsible for some of the most significant projects in the country across sectors such as Engineering Design, Civil Construction, Industrial Assembly, Equipment Manufacturing, Maintenance, and Logistics.



Hydroelectric, Thermal,  
Nuclear, and Renewable  
Power Plants



Pulp, Paper, Chemical,  
and Petrochemical  
Industries



Gas Processing  
and Transportation



Steel Plants  
and Mining Projects



Subways, Railways,  
Infrastructure,  
and Sanitation Works



Oil & Gas Industries:  
Platforms, Refineries,  
Facilities, and Pipelines



# Achievements & Accomplishments



## Human Resources Qualification Programs:



**National Professional Qualification Program:**  
Over 85,000 professionals trained across **136 job categories**



**MBA Course for Project Managers:** + de 300 professionals certified



**Ministry of Mines and Energy:** National Program for Mobilizing the Domestic Oil Industry



**MBA Course for Project Managers**



**Inspector Training Course**



# Benefits of Being a Member

**ABEMI** offers a wide range of exclusive activities and benefits, provided free of charge to its member companies.

Membership provides a strategic environment for knowledge exchange, institutional strengthening, and sector representation. Here are some of the key advantages:

Come to  
**ABEMI!**





# Benefits of Being a Member



- 1. Active Participation in Thematic Committees:** Member companies are invited to join committees focused on key sectoral topics such as Legal & Tax Affairs, QHSE (Quality, Health, Safety, and Environment), Productivity, ESG, Energy Transition, Communication, and Compliance. These forums promote technical discussions, experience sharing, and collaborative solution-building.
- 2. Access to Strategic Events:** Members can attend ABEMI-hosted events and other relevant industry gatherings free of charge, gaining valuable insights and strengthening institutional relationships.
- 3. Timely and Relevant Information:** ABEMI keeps its members informed on sector-specific topics, government decisions, market trends, organizational activities, and strategic opportunities.
- 4. High-Level Networking:** Membership offers direct engagement with leaders from some of the most prominent companies in Brazil's engineering, construction, assembly, manufacturing, and logistics sectors.
- 5. Collective Legal & Tax Support:** The association provides support in addressing legal matters of common interest, including sponsoring collective actions, such as tax lawsuits aimed at recovering unduly paid credits.
- 6. ProEC 4.0 Institute:** ABEMI oversees the ProEC 4.0 Institute, dedicated to advancing studies and initiatives for modernizing engineering and construction, with an emphasis on digital transformation and technological innovation.
- 7. Access to the Construction Industry Institute (CII):** Members gain access to the technical resources of CII, a U.S.-based benchmark organization in best practices and innovation for the engineering, construction, and assembly industries.
- 8. Connections with Strategic Entities:** ABEMI maintains relationships with major national organizations such as ABDIB, ABIMAQ, SINDUSCON, SINAENCO, ONIP, among others.
- 9. Partnerships with Leading Institutions:** Members benefit from agreements with recognized organizations such as the Lean Institute Brasil and Trace International, a global compliance best practices certifier.





**[www.abemi.org.br](http://www.abemi.org.br)**

**Head Office: Rua Tabapuã, 81, 9º andar, Suites 91 e 92,  
Itaim Bibi – ZIP Code:: 04533-901, São Paulo – SP, Brazil  
Phone: +55 (11) 3251-0333 – Email: [abemi@abemi.org.br](mailto:abemi@abemi.org.br)**



**Follow us on social media!**