



ABEMI

Associação Brasileira de Engenharia Industrial





Who We Are

THE ORGANIZATION

Since 1964, **ABEMI** has represented Brazilian industrial engineering companies, operating in the areas of Design, Construction, Assembly, Maintenance, Manufacturing, and Logistics, as well as companies specialized in EPC (Engineering, Procurement, and Construction).

CORE OBJECTIVE

To represent Brazilian engineering companies involved in Design, Civil Construction, Assembly and Maintenance, Manufacturing, and Logistics. Aligned with market challenges, **ABEMI's** activities are guided by key pillars such as ESG (Environmental, Social, and Governance), Innovation, Technology, and Compliance.

Mission

To unite and represent member companies.

To advocate for collective interests by:

- Engaging with public and private clients.
- Representing the industry before governmental and regulatory bodies.
- Promoting knowledge and best practices to enhance the sector's competitiveness.

To contribute to the **ECONOMIC** and **SOCIAL DEVELOPMENT** of the country

Vision

To be recognized as a **prestigious** and **representative institution in advocating for the interests** of its members and the **national industrial engineering sector.**





FOUNDATION

May 1964.



ORIGIN

Established as an association of industrial assembly companies.

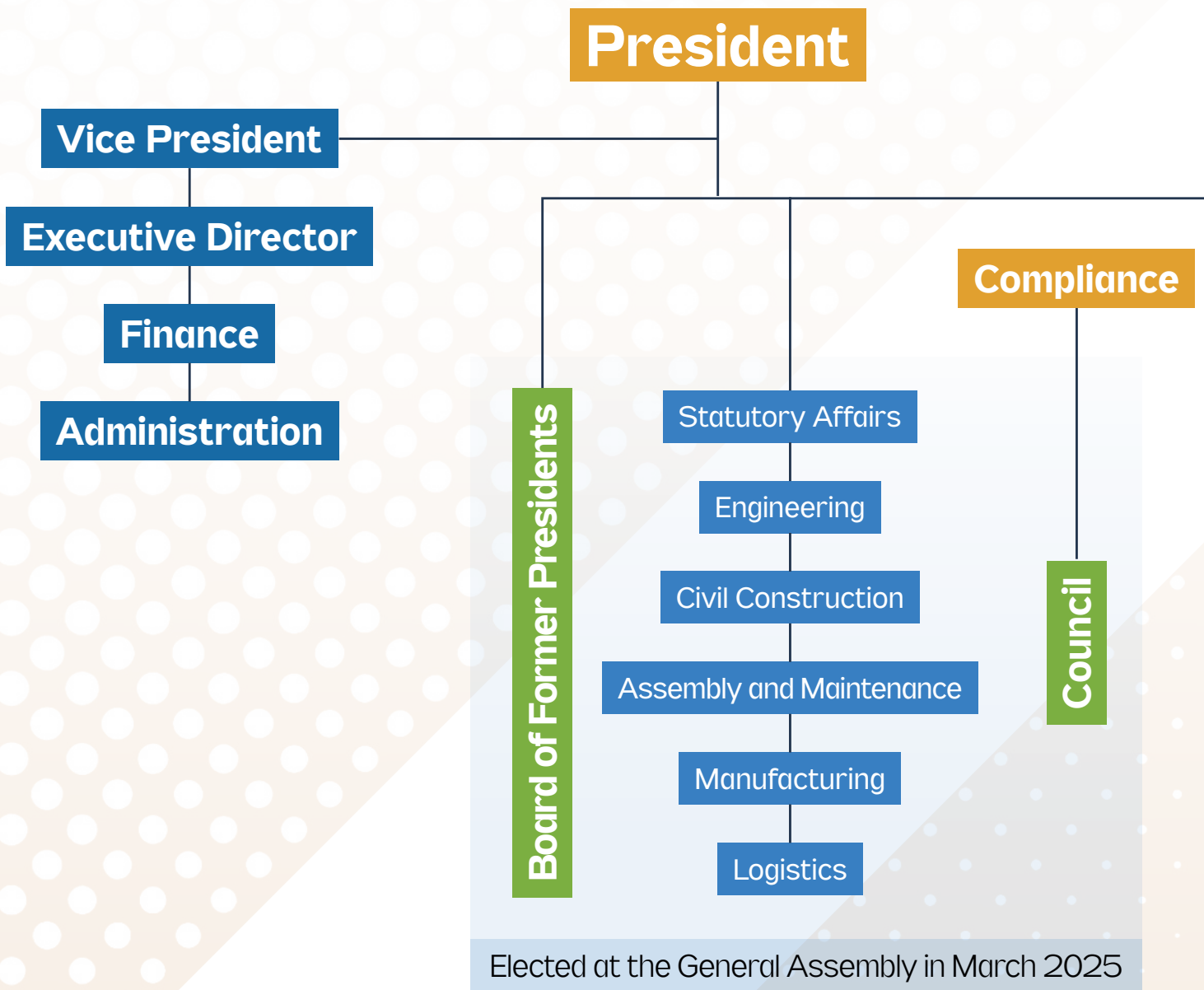
PURPOSE

To promote and enhance the performance of Brazilian industrial engineering companies.

IMPACT

Enabling the participation of Brazilian industrial engineering companies in all phases of project development.

Organizational Chart



ABEMI Committees

Energy Recovery
from Solid Waste

Communication & Marketing

Energy

ESG

Legal & Tax

HSE and Productivity

ABEMI Partnerships

CAMARB

Lean Institute Brasil

TRACE International

Deloitte

Appointed Directors

Legal & Tax

Communication & Marketing

Technology & Innovation

Offshore

Board of Directors

Elected members for the 2025-2028 Term

PRESIDENT

Nelson Romano (DBR Energies)

VICE PRESIDENT

Marcio A. Cancellara (Newco)

DIRECTOR OF ENGINEERING

Thomaz Americano (AP Consultoria e Projetos)

DIRECTOR OF MANUFACTURING

Paolo Fiorletta (Metroval Controle de Fluidos)

DIRECTOR OF ASSEMBLY AND MAINTENANCE

Jaime Llopis (Cobra Brasil Serviços)

DIRECTOR OF LOGISTICS

Henrique Zuppardo Junior (Megatranz Transportes)

DIRECTOR OF CIVIL CONSTRUCTION

Michel Rossi (EGTC Infra)

APPOINTED DIRECTORS

José Aparecido Mello - Executive Director

Maria Michielin - Legal & Tax Director (Toledo Marchetti Advogados)

Hideo Hama - Communications and Marketing Director (Fluxo Soluções)

Gilberto Israel - Offshore Director (Ecovix/Nova Engevix)

Maurício Godoy - Innovation & Technology Director

Marcelo Marchetti - Compliance Director (Toledo Marchetti Advogados)

Itaércio Marinho - Institutional Relations Director (Grupo Connecta)

Council Members

Elected Members for the 2025-2028 Term

ENGINEERING

Roberto Pena (GP Consultoria e Engenharia)

Cedric Romano (DBR Energies)

CIVIL CONSTRUCTION

André Bonugli (Engecampo)

Luiz Cholfe (Statura Engenharia e Proj.)

MANUFACTURING

Hideo Hama (Fluxo Soluções)

Davi Barbosa Azevedo (Kempetro Engenharia)

ASSEMBLY AND MAINTENANCE

Marcelo Neves Ferreira (Tenenge Engenharia)

Walace Monteiro (MID Infraestrutura)

LOGISTICS

Maurício Terenzio (Enterprise Transportes Internacionais)

Newton Freire (Innovo Tecnologia)

Boards

Coordination among members, clients, and stakeholders, **aiming to improve:**

- management of execution and control systems;
- construction processes and methods;
- technical and managerial staff.

We are **COMPETITIVE!**



Engineering



Logistics



**Civil
Construction**



Manufacturing



**Assembly
and Maintenance**



Partnerships & Agreements



Deloitte.

Trace International

Trace International: As part of **ABEMI's** commitment to upholding international standards of compliance and integrity, the agreement established with Trace International in 2019 has been successfully renewed on an annual basis.

CAMARB

Chamber of Mediation and Business Arbitration - Brazil: A strategic partnership aimed at offering members effective alternatives for the out-of-court resolution of commercial disputes, particularly within the engineering and construction sectors.

Lean Institute

Lean Institute Brasil (LIB) Methodology: Implementation of tailored tools and concepts from LIB designed specifically for the sector, significantly enhancing productivity, efficiency, and quality, while also supporting innovation initiatives such as BIM, digitalization, and industrialization.

ProEC 4.0

ProEC 4.0 (Programa Brasileiro de Engenharia e Construção): To promote the sustainable growth of the Industrial Engineering and Heavy Construction sector through innovation and the digital transformation of companies.

Work Committees

1. Energy Recovery from Solid and Urban Waste

To develop and implement strategies for the energy transition.

2. Communication & Marketing

Promote the actions of the Association and its **AFFILIATES** (Promover as ações da Associação e de suas associadas.)

3. Legal & Tax

To monitor legislative changes relevant to the industry and provide legal support for **ABEMI's** institutional actions to protect the market.

4. ESG (Environmental, Social and Governance)

To promote the adoption of **ESG** best practices in Industrial Engineering, reducing risks, generating positive social impact, and ensuring transparency and good governance, with the aim of making industrial systems more sustainable, competitive, and responsible, while ensuring economic value aligned with socio-environmental impact.

5. HSE and Productivity

To promote Health, Safety, and Environment (HSE) integrated with productivity, ensuring efficient, safe, and sustainable operations, with a focus on risk prevention, people's well-being, and continuous process improvement.

6. Energy Transition

To analyze technologies and develop programs aimed at the participation of **ABEMI** members in the Energy Transition and environmental decarbonization process.



Compliance

ABEMI, guided by the principles of integrity, ethics, and transparency, has a **Compliance Program** aimed at establishing the main guidelines and best practices that should govern its relationships with any individual or legal entity with which ABEMI relates or may come to relate.

The program seeks to ensure that all of the organization's actions are aligned with ethical and legal standards, fostering an organizational culture based on compliance and corporate responsibility.

The Compliance area is led by Marcelo Marchetti, Chief Compliance Officer (CCO), and is part of ABEMI's Senior Management, ensuring the independence necessary for the execution of its activities.

The Strength of the Companies

ABEMI has grown stronger alongside the increasing scale and relevance of its Member Companies. These companies are responsible for some of the most significant projects in the country across sectors such as Engineering Design, Civil Construction, Industrial Assembly, Equipment Manufacturing, Maintenance, and Logistics.



Hydroelectric, Thermal, Nuclear, and Renewable Power Plants



Pulp, Paper, Chemical, and Petrochemical Industries



Subways, Railways, Infrastructure, and Sanitation Works



Gas Processing and Transportation



Steel Plants and Mining Projects



Oil & Gas Industries: Platforms, Refineries, Facilities, and Pipelines

Achievements & Accomplishments

Human Resources Qualification Programs:



Inspector Training Course



MBA Course for Project Managers



Ministry of Mines and Energy: National Program for Mobilizing the Domestic Oil Industry



MBA Course for Project Managers: +300 professionals certified



National Professional Qualification Program: Over 85,000 professionals trained across **136 job categories**

Benefits of Being a Member

ABEMI offers its member companies free access to a broad portfolio of exclusive activities and benefits.

Membership provides a strategic environment for knowledge exchange, institutional strengthening, and sector representation. Below are some of the main advantages:

Benefits of Being a Member

1. Active Participation in Thematic Committees:

Forums for technical debates, experience exchange, and solution building on topics such as Legal, QSMS, Productivity, ESG, Energy Transition, Communication, and Compliance.

2. Access to Strategic Events:

Members can attend events hosted by ABEMI or other relevant meetings to which the association is invited, free of charge, expanding their knowledge and strengthening institutional relationships.

3. Updated and Relevant Information:

ABEMI keeps its members informed about topics of interest to the industry, government decisions, market trends, the association's activities, and strategic opportunities.

4. High-Level Networking:

By joining ABEMI, your company will interact with leaders from some of the main companies in the engineering, construction, assembly, manufacturing, and logistics



sectors in the country.

5. Collective Legal Support: The association offers support in discussing legal matters of common interest, including sponsoring collective legal actions, such as tax-related lawsuits aimed at recovering improperly paid credits.

6. ProEC 4.0 Institute: ABEMI maintains the ProEC 4.0 Institute, which is dedicated to developing studies and initiatives for the modernization of engineering and construction, with a focus on digitalization and technological innovation.

7. Connection with Strategic Entities: ABEMI maintains institutional relationships with important national entities, such as **ABDIB, ABIMAQ, SINDUSCON, SINAENCO, ONIP**, among others.

8. Partnerships with Institutions of Excellence: Members have access to partnerships with renowned organizations such as the **Lean Institute Brasil and Trace International** (a global certifier of compliance best practices).

9. Promotion of expertise and projects: Visibility



Come to **ABEMI!**

Join Us!



www.abemi.org.br

Head Office: Rua Tabapuã, 81, 9º andar, Suites 91 e 92,
Itaim Bibi – ZIP Code: 04533-901, São Paulo – SP, Brazil

Phone: +55 (11) 3251-0333 – Email: abemi@abemi.org.br



Follow us on social media!



